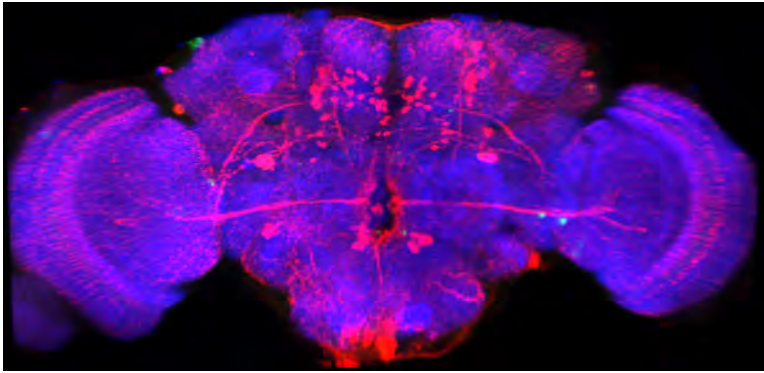


We are hiring!

How do animals make decisions when faced with conflicting options?



Our lab uses the fruit fly *Drosophila* to unravel the genetic and neural mechanisms underlying decision-making. **Check our lab webpage:** www.rezavallab.org

Post-doc and technician posts available in the lab

We are seeking to appoint a **Post-Doctoral Fellow (1 year)** and a **Research Technician (3 years)** with experience and/or interest in neuroscience to join our group. The successful applicants will pursue research projects with the goal of understanding the mechanisms underlying decision-making. By studying how the brain makes decisions at a genetic, cellular and circuit level, in an accessible experimental system, we aim to reveal fundamental principles underlying behavioural choices that might be present across species. Both positions are funded by the BBRSC.

About the lab:

You will be part of a young team within the stimulating and international environment of the University of Birmingham. We are based in the School of Biosciences, as part of an exciting fly community.

For more info about the posts and how to apply, visit: <https://www.rezavallab.org/>

Closing Date: 10th July 2025

Contact Dr Carolina Rezaval with any questions c.rezaval@bham.ac.uk

Dr Carolina Rezaval
Associate Professor
School of Biosciences
University of Birmingham
www.rezavallab.org

